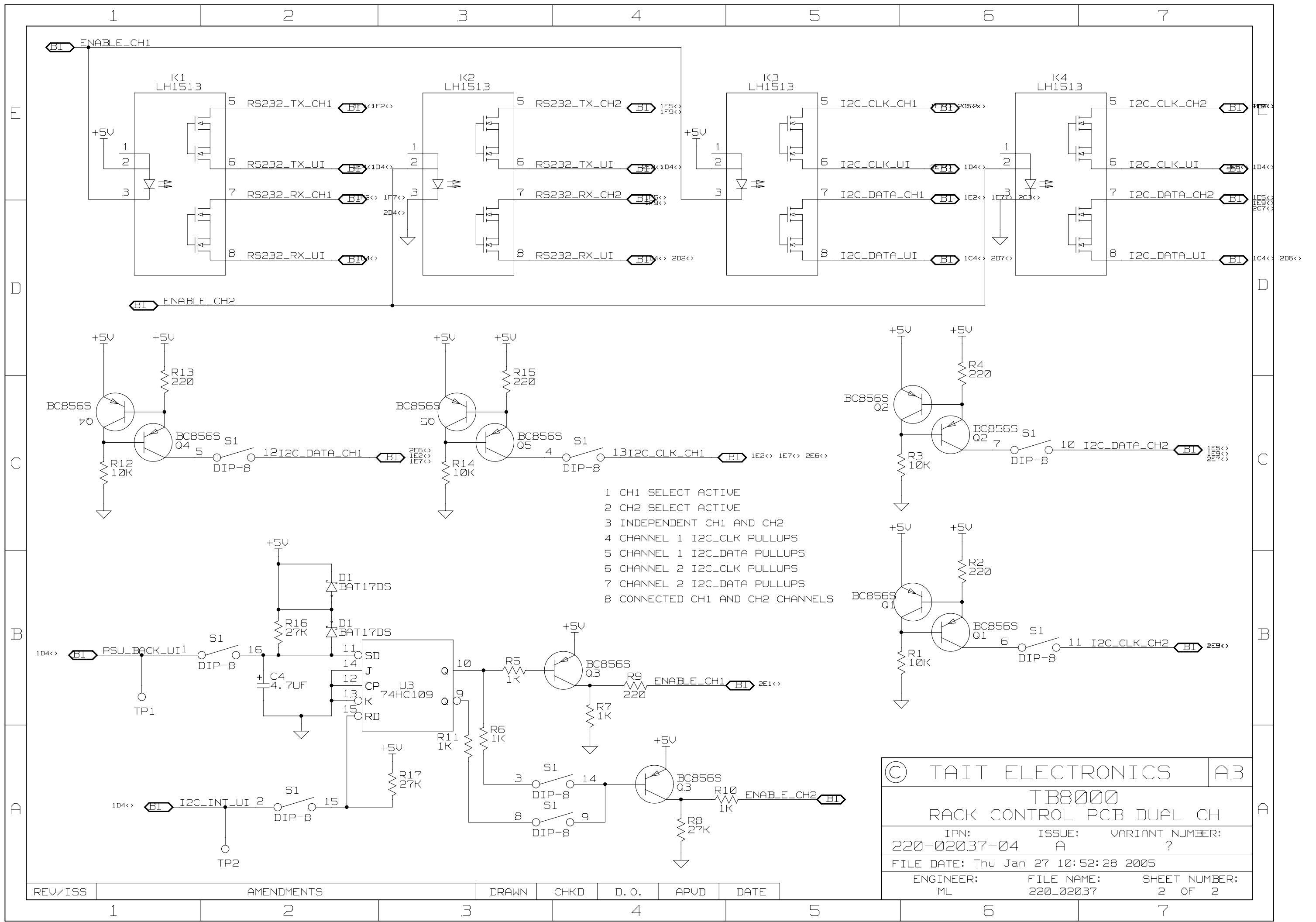


04A	ECO ??????	TB	CK	?	24-01-05
02A	PROTOTYPE ONLY	ML	CK	?	25-10-04
02A	DCO 02037-002	ML	CK	?	25-08-03
01	NEW BOARD				
REV/ISS	AMENDMENTS	DRAWN	CHKD	D. O.	APVD
1					
2					
3					
4					
5					

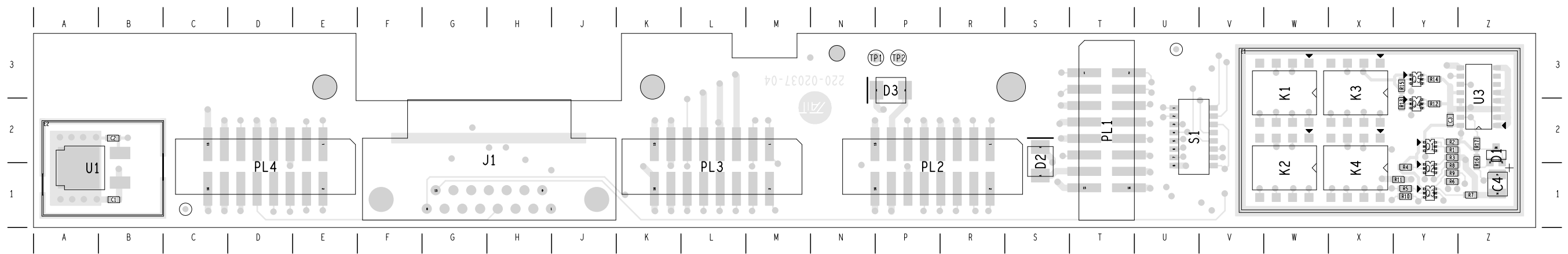
© TAIT ELECTRONICS		A2
TB8000		
RACK CONTROL PCB DUAL CH		
IPN:	ISSUE:	VARIANT NUMBER:
220-02037-04	A	?
FILE DATE: Thu Jan 27 10:52:27 2005		
ENGINEER:	FILE NAME:	SHEET NUMBER:
ML	220_02037	1 OF 2



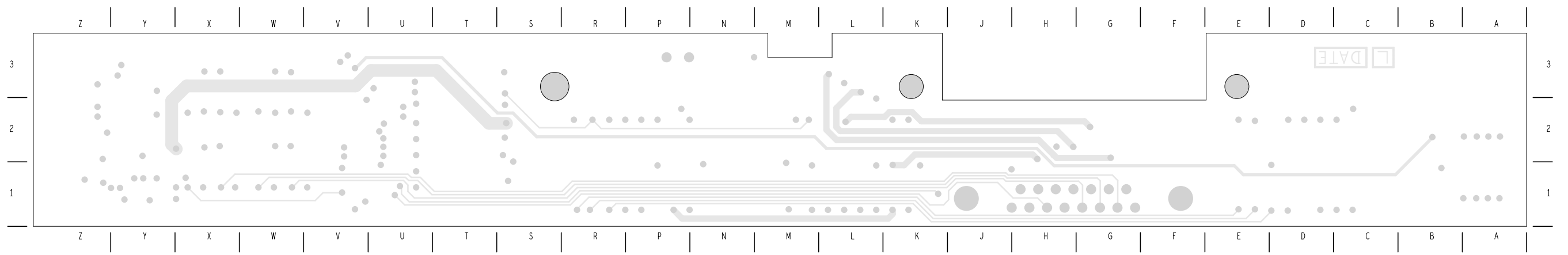
- 1 CH1 SELECT ACTIVE
- 2 CH2 SELECT ACTIVE
- 3 INDEPENDENT CH1 AND CH2
- 4 CHANNEL 1 I2C_CLK PULLUPS
- 5 CHANNEL 1 I2C_DATA PULLUPS
- 6 CHANNEL 2 I2C_CLK PULLUPS
- 7 CHANNEL 2 I2C_DATA PULLUPS
- 8 CONNECTED CH1 AND CH2 CHANNELS

© TAIT ELECTRONICS		A3
TB8000		
RACK CONTROL PCB DUAL CH		
IPN:	ISSUE:	VARIANT NUMBER:
220-02037-04	A	?
FILE DATE: Thu Jan 27 10:52:28 2005		
ENGINEER:	FILE NAME:	SHEET NUMBER:
ML	220_02037	2 OF 2

REV/ISS	AMENDMENTS	DRAWN	CHKD	D. O.	APVD	DATE
1	2	3	4	5	6	7



TAIT ELECTRONICS	IPN: 220-02037-04	ISS: A	DATE: 2Feb05	SCALE: NTS
TB8000 Rack Interconnect LAYOUT-PRIMARY-SIDE				



TAIT ELECTRONICS	IPN:	ISS:	DATE:	SCALE:
	220-02037-04	A	2Feb05	NTS
TB8000 Rack Interconnect LAYOUT-SECONDARY-SIDE				